



BLISS  
BLAKENEY



Floor Plans

# Floor Plan

The House / The Cabin - Ground Floor



BLISS  
BLAKENEY



Total Gross Internal Area

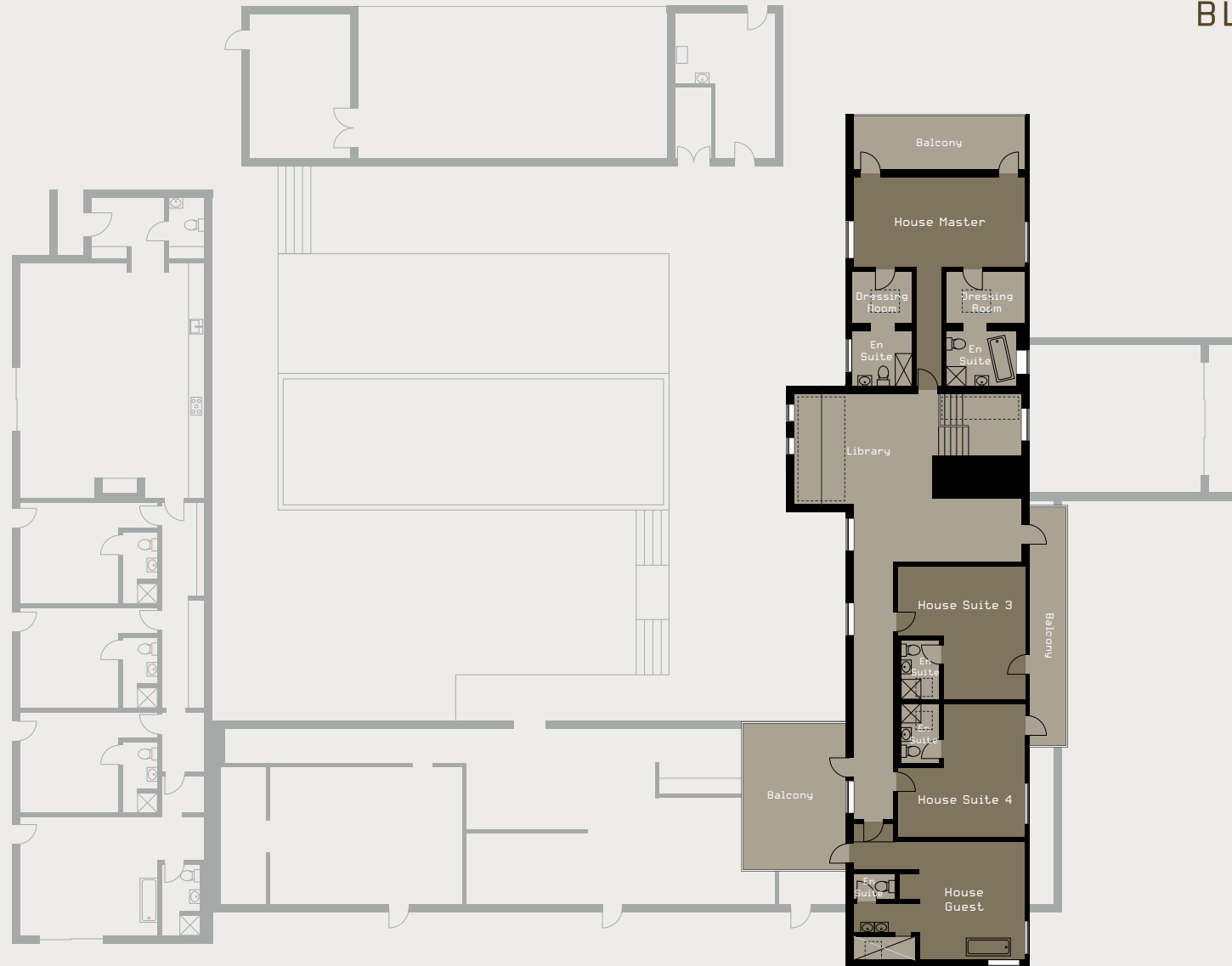
9644 sq ft / 896 sq m

# Floor Plan

The House - First Floor



BLISS  
BLAKENEY



Total Gross Internal Area

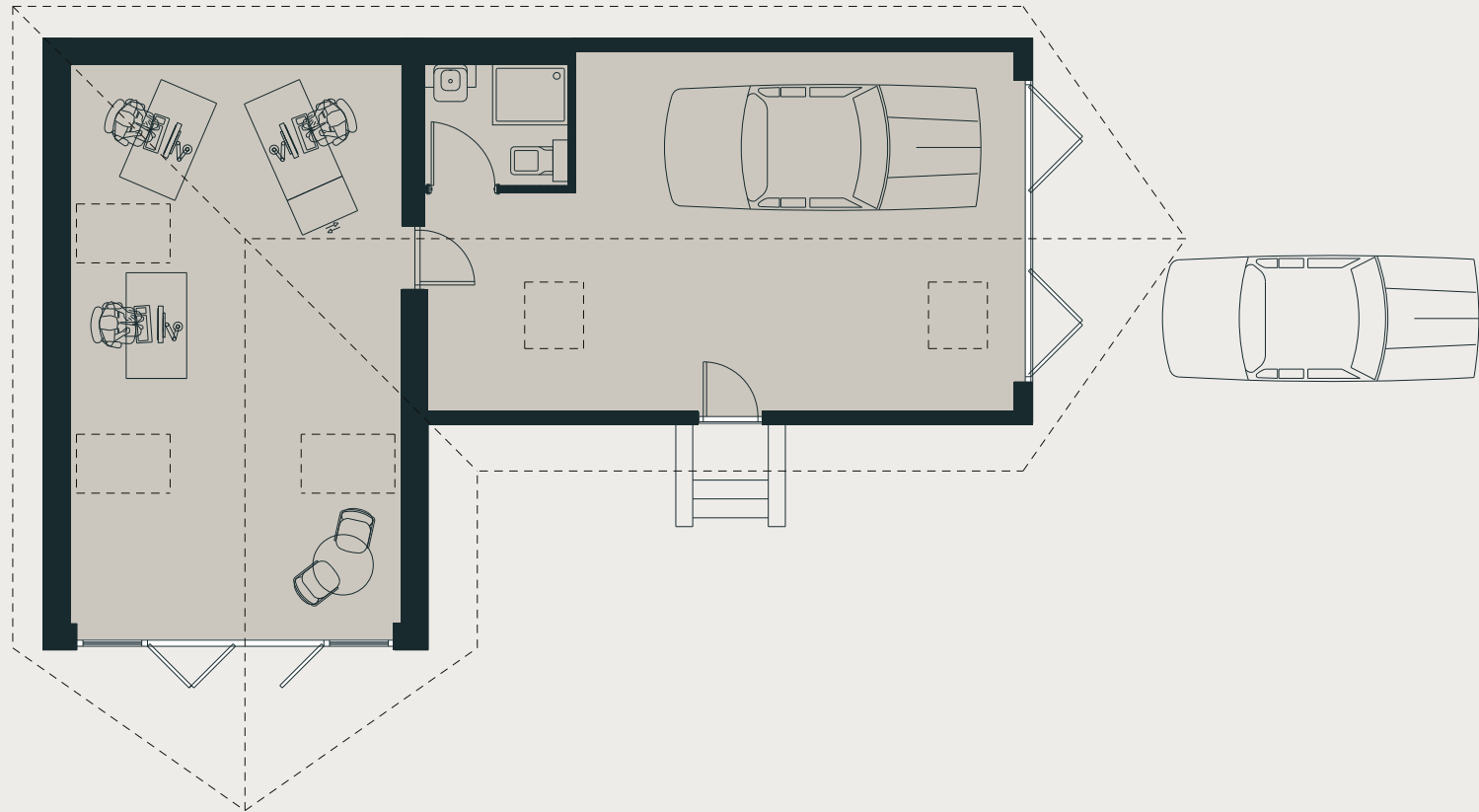
9644 sq ft / 896 sq m

# Floor Plan

The Hub



BLISS  
BLAKENEY



Total Gross Internal Area

9644 sq ft / 896 sq m